



VALUE FOR THE FLEET



TRUCK AND BUS PRODUCT GUIDE 2012

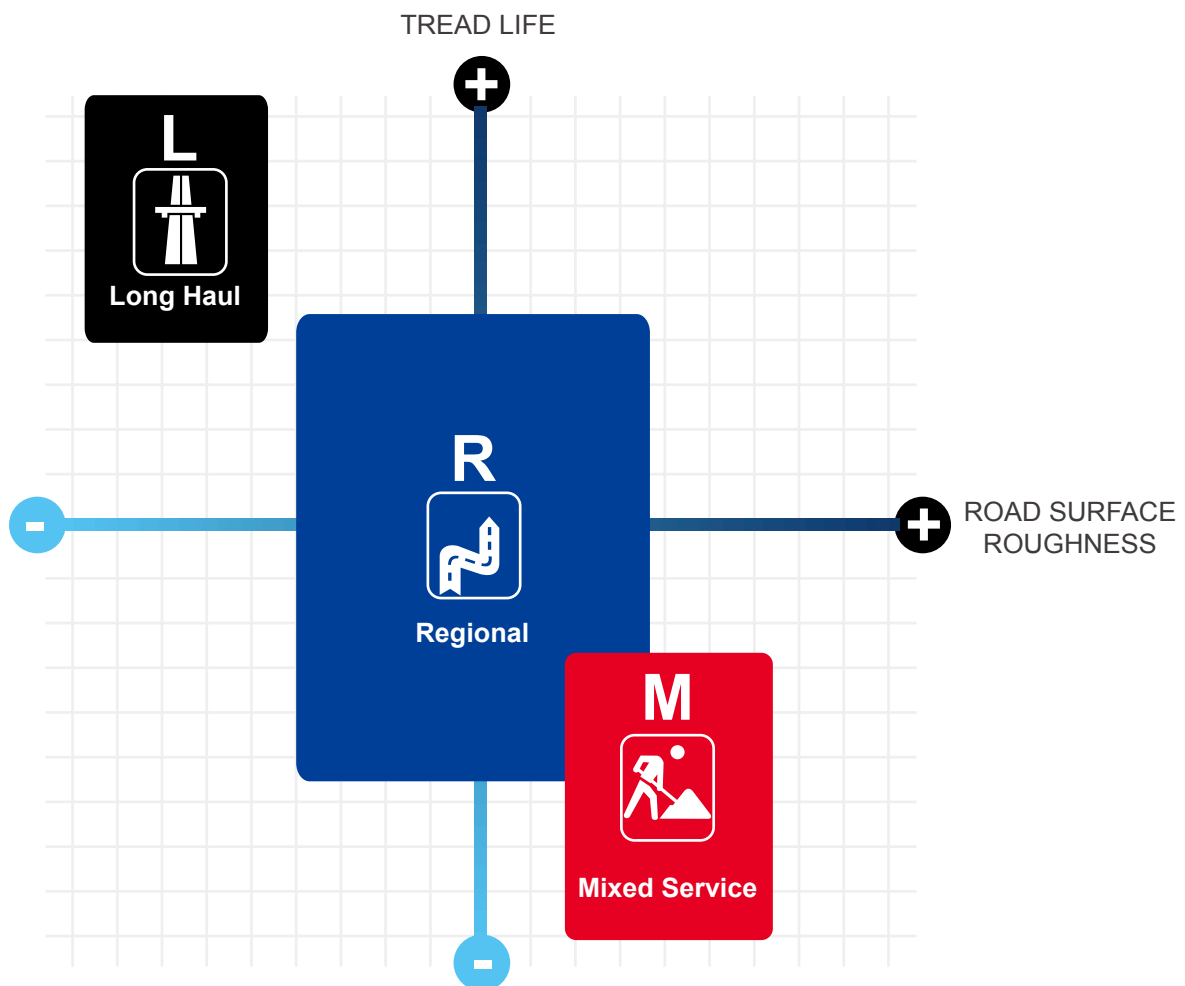
Table of Contents

| | Page |
|---|------|
| Market Segments | 2 |
| Pattern Range | 4 |
| Long Haul | 6 |
| Regional | 10 |
| Mixed Service | 16 |
| Product Range | 20 |
| Inflation Recommendations | 22 |
| Designations, Load and Speed Index | 23 |
| Load and Inflation Table | 24 |
| Truck Tire Warranty | 28 |

MARKET SEGMENTS

Tires designed and developed for specific application requirements

Using the latest design and manufacturing technology, GT Radial has developed truck tires for a wide range of North American applications.



This diagram gives you details of all our ranges according to the use.

Product details given for information only. GT Radial reserves the right to modify details of products and services at any time and without notice.



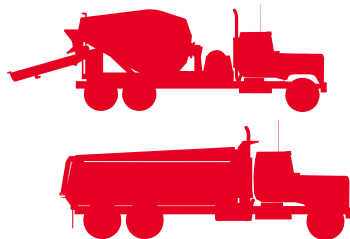
Long Haul Operation:

- Interstate and Highway
- Long distance routes
- Constant speeds with minimal braking and accelerating
- Well paved road conditions



Regional Operation:














- Regional highways and city streets
- Flexible in a variety of applications
- Frequent braking, acceleration and turning
- Mainly on paved road, occasional use on unpaved road conditions



Mixed Service Operation:

- Frequent use both on and off road
- Heavy Loads
- Construction

PATTERN RANGE

| | | Long Haul | | Regional | |
|---|------|---|--|---|--|
| | | <div>L</div> <div>  </div> | | <div>R</div> <div>  </div> | |
| | | Long Haul | | Regional | |
| POSITION | ROAD |  | |  | |
|  | |  | |  | |
| Steer | | GSL213 FS-p.7 | | GT279-p.14 GT879-p.15 | |
|  | |  | |  | |
| Drive | | GT669+ FS-p.8 | | GT279-p.14 GT879-p.15 | |
|  | |  | |  | |
| Trailer | | GT979 FS-p.10 | | GT879-p.15 | |

Regional



Mixed Service



Regional



Mixed service



GT01-p.22



GT876-p.23



GT978+-p.19



GT668-p.16



GT688-p.17



GT678-p.18



GT01-p.22



GT876-p.23



GT01-p.22



GT876-p.23



Long Haul



Operation:

- Interstate and highway
- Long distance routes
- Constant speeds with minimal braking and accelerating
- Well paved road conditions



GSL213 FS



Exceptional All-new Long Haul Steer tire verified by SmartWay and compliant with CARB. Advanced compound technology and pattern design for outstanding overall performance, resistance to irregular wear, and long mileage



Features

- Fuel Saving compound
- Extra wide and deep tread
- Defense ribs
- Braking force support ribs
- Robust casing

Benefits

- ▶ Lower rolling resistance and higher fuel economy
- ▶ Outstanding tread life
- ▶ Effective prevention of irregular wear
- ▶ Effective barrier to the spread of irregular wear
- ▶ Excellent retreadability

SIZE RANGE

| TIRE SIZE | PR | LR | LOAD INDEX (single/ dual) | SR | APPROVED WHEEL | ALLOWED WHEEL | MAX LOAD SINGLE (LBS@ PSI) | MAX LOAD DUAL (LBS@ PSI) | SECTION WIDTH | SLR | OVERALL DIAMETER | TREAD DEPTH | RPM | WEIGHT |
|-------------|----|----|---------------------------------|----|-------------------|------------------|-------------------------------------|-----------------------------------|------------------|------|---------------------|------------------|-----|--------|
| | | | | | in | in | lbs | psi | in | in | in | 32 nd | | lbs |
| 11R22.5 | 14 | G | 144/142 | M | 8.25 | 7.50 | 6175@105 | 5840@105 | 11.0 | 19.3 | 41.5 | 20 | 500 | 128.0 |
| 295/75R22.5 | 14 | G | 144/141 | M | 9.00 | 8.25 | 6175@110 | 5675@110 | 11.6 | 18.7 | 39.9 | 20 | 520 | 122.4 |
| 11R24.5 | 14 | G | 146/143 | M | 8.25 | 7.50 | 6610@105 | 6005@105 | 11.0 | 20.3 | 43.4 | 20 | 475 | 137.5 |
| 285/75R24.5 | 14 | G | 144/141 | M | 8.25 | NA | 6175@110 | 5675@110 | 11.2 | 19.4 | 41.3 | 20 | 504 | 124.9 |

PR Ply Rating LR Load Range SR Speed Rating SLR Static Loaded Radius

(FS: Fuel Saving compound)



GT669+ FS



Exceptional Radial Drive tire verified by SmartWay and compliant with CARB. Special compound and tread design ensure long tread life and reliable performance. Advanced casing construction delivers superior retreadability for competitive cost per mile



Features

- Fuel Saving compound
- Closed shoulder, central block pattern
- Wide tread design
- Robust casing

Benefits

- ▶ Lower rolling resistance and higher fuel economy
- ▶ Extended tread life, consistent traction and braking
- ▶ Bigger footprint for extended tread life
- ▶ Excellent retreadability

SIZE RANGE

| TIRE SIZE | PR | LR | LOAD INDEX (single/ dual) | SR | APPROVED WHEEL | ALLOWED WHEEL | MAX LOAD SINGLE (LBS@ PSI) | MAX LOAD DUAL (LBS@ PSI) | SECTION WIDTH | SLR | OVERALL DIAMETER | TREAD DEPTH | RPM | WEIGHT |
|-------------|----|----|---------------------------------|----|-------------------|------------------|-------------------------------------|-----------------------------------|------------------|------|---------------------|------------------|-----|--------|
| | | | | | in | in | lbs | psi | in | in | in | 32 nd | | lbs |
| 11R22.5 | 14 | G | 144/142 | L | 8.25 | 7.50 | 6175@105 | 5840@105 | 11.0 | 19.3 | 41.5 | 28 | 496 | 135.0 |
| 11R22.5 | 16 | H | 148/145 | L | 8.25 | 7.50 | 6940@120 | 6395@120 | 11.0 | 19.3 | 41.5 | 28 | 496 | 135.6 |
| 295/75R22.5 | 14 | G | 144/141 | L | 9.00 | 8.25 | 6175@110 | 5675@110 | 12.0 | 18.7 | 40.2 | 28 | 518 | 130.0 |
| 11R24.5 | 14 | G | 146/143 | L | 8.25 | 7.50 | 6610@105 | 6005@105 | 11.0 | 20.3 | 43.5 | 28 | 473 | 145.0 |
| 11R24.5 | 16 | H | 149/146 | L | 8.25 | 7.50 | 7160@120 | 6610@120 | 11.0 | 20.3 | 43.5 | 28 | 473 | 147.0 |
| 285/75R24.5 | 14 | G | 144/141 | L | 8.25 | NA | 6175@110 | 5675@110 | 11.0 | 19.4 | 41.3 | 28 | 500 | 131.1 |

PR Ply Rating LR Load Range SR Speed Rating SLR Static Loaded Radius

(FS: Fuel Saving compound)



GT979 FS



Highly dependable Trailer Radial tire verified by SmartWay and compliant with CARB. Special tread compound and design provide long tread life. Robust casing offers excellent retreadability



Features

Benefits

- Fuel Saving compound ► Lower rolling resistance and higher fuel economy
- Strong shoulder ribs ► High resistance to scrub and lateral forces
- Special tread design ► Prevents irregular wear and deliver extended tread life
- Robust casing ► Excellent retreadability

SIZE RANGE

| TIRE SIZE | PR | LR | LOAD INDEX (single/dual) | SR | APPROVED WHEEL | ALLOWED WHEEL | MAX LOAD SINGLE (LBS@ PSI) | MAX LOAD DUAL (LBS@ PSI) | SECTION WIDTH | SLR | OVERALL DIAMETER | TREAD DEPTH | RPM | WEIGHT |
|-------------|----|----|--------------------------|----|----------------|---------------|----------------------------|--------------------------|---------------|------|------------------|------------------|-----|--------|
| | | | | | in | in | lbs | psi | in | in | in | 32 nd | | lbs |
| 11R22.5 | 14 | G | 144/142 | L | 8.25 | 7.50 | 6175@105 | 5840@105 | 11.0 | 19.4 | 41.5 | 11 | 503 | 117 |
| 295/75R22.5 | 14 | G | 144/141 | L | 9.00 | 8.25 | 6175@110 | 5675@110 | 11.6 | 18.7 | 39.9 | 11 | 520 | 114 |
| 11R24.5 | 14 | G | 146/143 | L | 8.25 | 7.50 | 6610@105 | 6005@105 | 11.0 | 20.3 | 43.5 | 11 | 480 | 126 |
| 285/75R24.5 | 14 | G | 144/141 | L | 8.25 | NA | 6175@110 | 5675@110 | 11.2 | 19.3 | 41.3 | 11 | 504 | 115 |

PR Ply Rating LR Load Range SR Speed Rating SLR Static Loaded Radius
(FS: Fuel Saving compound)



Regional

R



Operation:

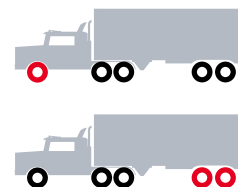
- Regional highways and city streets
- Flexible in a variety of applications
- Frequent braking, acceleration and turning
- Mainly on paved road, occasional use on unpaved road conditions



GT279



Outstanding Radial Steer
designed for Regional Highway
applications



Features

- Five straight rib pattern
- Deep tread depth
- Multiple sipes in five ribs

Benefits

- ▶ Reliable control and handling
- ▶ Provides long tread life
- ▶ Optimum traction and braking

SIZE RANGE

| TIRE SIZE | PR | LR | LOAD INDEX (single/ dual) | SR | APPROVED WHEEL | ALLOWED WHEEL | MAX LOAD SINGLE (LBS@ PSI) | MAX LOAD DUAL (LBS@ PSI) | SECTION WIDTH | SLR | OVERALL DIAMETER | TREAD DEPTH | RPM | WEIGHT |
|-------------|----|----|---------------------------------|----|-------------------|------------------|-------------------------------------|-----------------------------------|------------------|------|---------------------|------------------|-----|--------|
| | | | | | in | in | lbs | psi | in | in | in | 32 nd | | lbs |
| 225/70R19.5 | 14 | G | 128/126 | J | 6.75 | 6.00 | 3970@110 | 3750@110 | 8.9 | 14.9 | 31.9 | 16 | 655 | 71.1 |
| 245/70R19.5 | 16 | H | 136/134 | M | 7.50 | 6.75 | 4940@120 | 4675@120 | 9.6 | 15.4 | 33.0 | 18 | 633 | 78.3 |
| 10R22.5 | 14 | G | 141/139 | M | 7.50 | 6.75 | 5675@115 | 5355@115 | 10.0 | 18.7 | 40.1 | 18 | 521 | 110.0 |
| 255/70R22.5 | 16 | H | 140/137 | M | 7.50 | 8.25 | 5510@120 | 5070@120 | 10.0 | 17.1 | 36.6 | 18 | 568 | 94.8 |
| 11R22.5 | 14 | G | 144/142 | M | 8.25 | 7.50 | 6175@105 | 5840@105 | 11.0 | 19.4 | 41.5 | 21 | 504 | 127.0 |
| 11R22.5 | 16 | H | 148/145 | M | 8.25 | 7.50 | 6940@120 | 6395@120 | 11.0 | 19.4 | 41.5 | 21 | 504 | 127.0 |
| 295/75R22.5 | 14 | G | 144/141 | M | 9.00 | 8.25 | 6175@110 | 5675@110 | 11.6 | 18.7 | 39.9 | 20 | 520 | 124.5 |
| 11R24.5 | 14 | G | 146/143 | M | 8.25 | 7.50 | 6610@105 | 6005@105 | 11.0 | 20.3 | 43.5 | 19 | 482 | 134.0 |
| 11R24.5 | 16 | H | 149/146 | M | 8.25 | 7.50 | 7160@120 | 6610@120 | 11.0 | 20.3 | 43.5 | 20 | 482 | 136.0 |
| 285/75R24.5 | 14 | G | 144/141 | M | 8.25 | NA | 6175@110 | 5675@110 | 11.2 | 19.3 | 41.3 | 20 | 504 | 122.5 |

PR Ply Rating LR Load Range SR Speed Rating SLR* Static Loaded Radius



GT879



**Extraordinary All Wheel position Radial
designed for Regional Applications**



Features

- Five rib tread pattern
- Wide straight grooves
- Cross sipes
in intermediate ribs
- Equal rib distribution

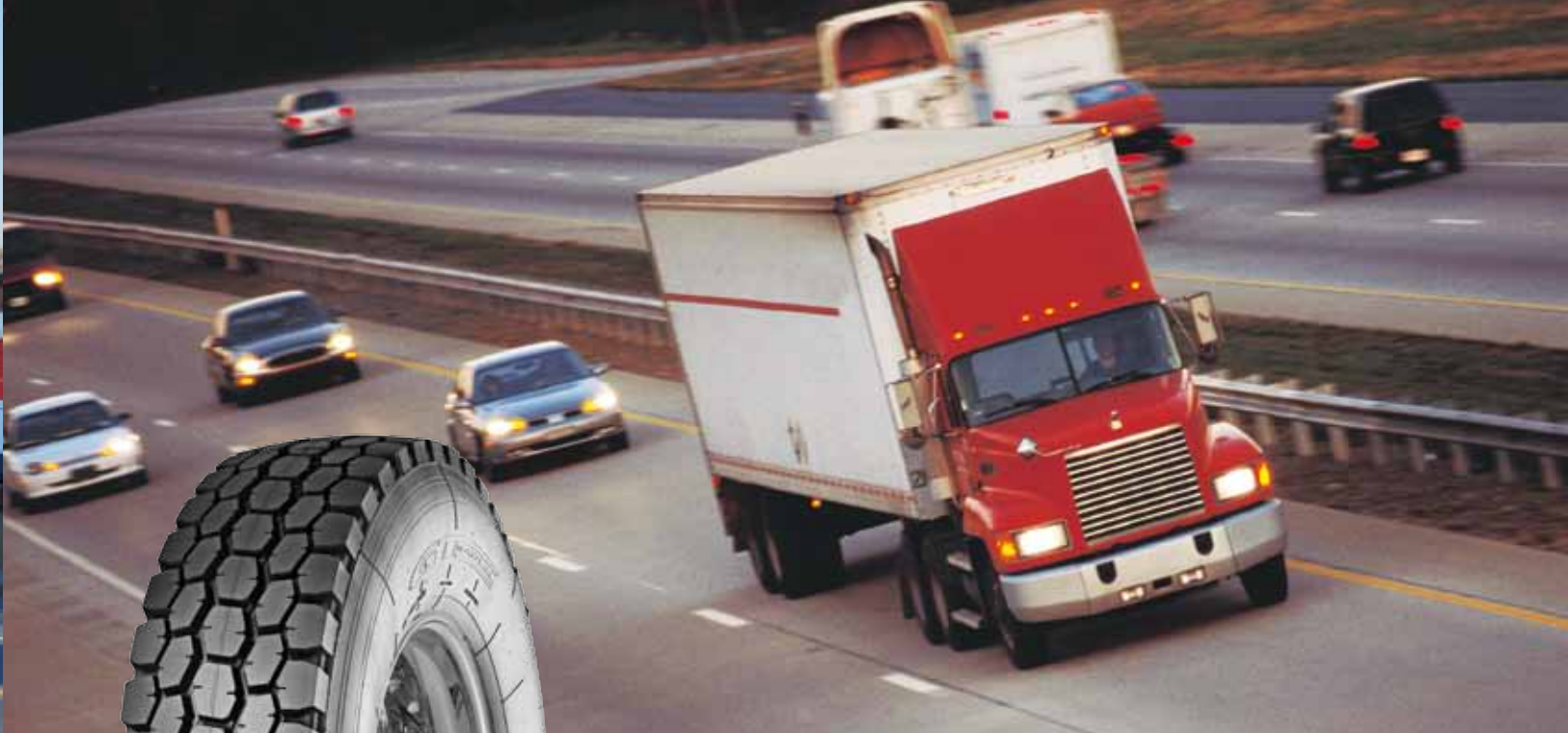
Benefits

- ▶ Excellent maneuverability
- ▶ Exceptional water evacuation
- ▶ Enhanced traction and longer tread life
- ▶ Tread scrubbing resistance

SIZE RANGE

| TIRE SIZE | PR | LR | LOAD INDEX (s/d) | SS | APPROVED WHEEL | ALLOWED WHEEL | MAX LOAD (s/d) | MAX PRESSURE (s/d) | SECTION WIDTH | SLR | OVERALL DIAMETER | TREAD DEPTH | RPM | WEIGHT |
|-------------|----|----|----------------------|----|----------------|---------------|----------------|--------------------|---------------|------|------------------|-------------|-----|--------|
| | | | | | in | in | lbs | psi | in | in | in | 32nd | | lbs |
| 215/75R17.5 | 16 | H | 135/133 | J | 6.00 | 6.75 | 4805/4540 | 125/125 | 8.5 | 14.2 | 30.2 | 16 | 682 | 67 |
| 235/75R17.5 | 14 | G | 132/130 | J | 6.75 | 7.50 | 4410/4190 | 110/110 | 9.3 | 14.7 | 31.4 | 16 | 668 | 72 |
| 235/75R17.5 | 16 | H | 143/141 | J | 6.75 | 7.50 | 6005/5675 | 125/125 | 9.3 | 14.7 | 31.4 | 16 | 668 | 73 |
| 265/70R19.5 | 16 | H | 140/138 | M | 7.50 | 8.25 | 5510/5205 | 115/115 | 10.4 | 16.2 | 34.1 | 18 | 612 | 86 |
| 11R22.5 | 14 | G | 144/142 | M | 8.25 | 7.50 | 6175/5840 | 105/105 | 11.0 | 19.4 | 41.5 | 21 | 500 | 127 |
| 11R22.5 | 16 | H | 148/145 | M | 8.25 | 7.50 | 6940/6395 | 120/120 | 11.0 | 19.4 | 41.5 | 21 | 500 | 127 |
| 295/75R22.5 | 14 | G | 144/141 | M | 9.00 | 8.25 | 6175/5675 | 110/110 | 11.6 | 18.7 | 39.9 | 21 | 518 | 123 |
| 12R22.5 | 16 | H | 152/148 | M | 9.00 | 8.25 | 7830/6940 | 123/123 | 12.0 | 20.0 | 42.7 | 22 | 486 | 143 |
| 315/80R22.5 | 18 | J | 154/151 (156/151) | M | 9.00 | 9.75 | 8270/7610 | 120/120 | 12.4 | 19.7 | 42.4 | 21 | 493 | 146 |
| 11R24.5 | 14 | G | 146/143 | M | 8.25 | 7.50 | 6610/6005 | 105/105 | 11.0 | 20.3 | 43.5 | 21 | 477 | 136 |
| 11R24.5 | 16 | H | 149/146 | M | 8.25 | 7.50 | 7160/6610 | 120/120 | 11.0 | 20.3 | 43.5 | 21 | 477 | 138 |
| 285/75R24.5 | 14 | G | 144/141 | M | 8.25 | NA | 6175/5675 | 110/110 | 11.2 | 19.3 | 41.3 | 21 | 501 | 123 |

PR Ply Rating **LR** Load Range **(s/d)** Single/Dual **SS** Speed Symbol **SLR** Static Loaded Radius



GT668



**Exceptional Radial Drive tire
providing long tread life, reliable
traction and value for all season
regional application**



Features

- Aggressive tread pattern
- Deep lug tread
- Alternating tread block design

Benefits

- ▶ Powerful wet and dry traction
- ▶ Long wear life
- ▶ Even force distribution to resist irregular wear

SIZE RANGE

| TIRE SIZE | PR | LR | LOAD INDEX (single/ dual) | SR | APPROVED WHEEL | ALLOWED WHEEL | MAX LOAD SINGLE (LBS@ PSI) | MAX LOAD DUAL (LBS@ PSI) | SECTION WIDTH | SLR | OVERALL DIAMETER | TREAD DEPTH | RPM | WEIGHT |
|-------------|----|----|---------------------------------|----|-------------------|------------------|-------------------------------------|-----------------------------------|------------------|------|---------------------|------------------|-----|--------|
| | | | | | in | in | lbs | psi | in | in | in | 32 nd | | lbs |
| 11R22.5 | 14 | G | 144/142 | L | 8.25 | 7.50 | 6175@105 | 5840@105 | 11.0 | 19.4 | 41.5 | 28 | 495 | 135.0 |
| 11R22.5 | 16 | H | 148/145 | L | 8.25 | 7.50 | 6940@120 | 6395@120 | 11.0 | 19.4 | 41.5 | 28 | 495 | 135.5 |
| 295/75R22.5 | 14 | G | 144/141 | L | 9.00 | 8.25 | 6175@110 | 5675@110 | 11.6 | 18.7 | 40.2 | 28 | 513 | 131.5 |
| 11R24.5 | 14 | G | 146/143 | L | 8.25 | 7.50 | 6610@105 | 6005@105 | 11.0 | 20.3 | 43.5 | 28 | 473 | 144.9 |
| 11R24.5 | 16 | H | 149/146 | L | 8.25 | 7.50 | 7160@120 | 6610@120 | 11.0 | 20.3 | 43.5 | 28 | 473 | 146.7 |
| 285/75R24.5 | 14 | G | 144/141 | L | 8.25 | NA | 6175@110 | 5675@110 | 11.2 | 19.3 | 41.3 | 28 | 496 | 132.0 |

PR Ply Rating **LR** Load Range **SR** Speed Rating **SLR** Static Loaded Radius



GT688



Outstanding Radial Drive for regional application



Features

- Aggressive lug pattern
- Deep tread depth
- Central dual serrated ribs

Benefits

- ▶ Excellent traction on wet and dry roads
- ▶ Long tread life and better cost per mile
- ▶ Exceptional stability and control

SIZE RANGE

| TIRE SIZE | PR | LR | LOAD INDEX (single/ dual) | SR | APPROVED WHEEL | ALLOWED WHEEL | MAX LOAD SINGLE (LBS@ PSI) | MAX LOAD DUAL (LBS@ PSI) | SECTION WIDTH | SLR | OVERALL DIAMETER | TREAD DEPTH | RPM | WEIGHT |
|-------------|----|----|---------------------------------|----|-------------------|------------------|-------------------------------------|-----------------------------------|------------------|------|---------------------|------------------|-----|--------|
| | | | | | in | in | lbs | psi | in | in | in | 32 nd | | lbs |
| 10R22.5 | 14 | G | 141/139 | M | 7.50 | 6.75 | 5675@115 | 5355@115 | 10.0 | 18.7 | 40.1 | 20 | 518 | 111.6 |
| 11R22.5 | 14 | G | 144/142 | M | 8.25 | 7.50 | 6175@105 | 5840@105 | 11.0 | 19.4 | 41.5 | 22 | 497 | 126.9 |
| 11R22.5 | 16 | H | 148/144 | M | 8.25 | 7.50 | 6940@120 | 6170@120 | 11.0 | 19.4 | 41.5 | 22 | 497 | 127.3 |
| 295/75R22.5 | 14 | G | 144/141 | M | 9.00 | 8.25 | 6175@110 | 5675@110 | 11.6 | 18.7 | 39.9 | 22 | 519 | 120.9 |
| 11R24.5 | 14 | G | 146/143 | M | 8.25 | 7.50 | 6610@105 | 6005@105 | 11.0 | 20.3 | 43.5 | 22 | 474 | 136.4 |
| 11R24.5 | 16 | H | 149/146 | M | 8.25 | 7.50 | 7160@120 | 6610@120 | 11.0 | 20.3 | 43.5 | 22 | 474 | 138.2 |
| 285/75R24.5 | 14 | G | 144/141 | M | 8.25 | NA | 6175@110 | 5675@110 | 11.2 | 19.3 | 41.3 | 23 | 501 | 125.1 |

PR Ply Rating **LR** Load Range **SR** Speed Rating **SLR** Static Loaded Radius



GT678



**Outstanding Radial Drive for
Regional Pick-Up and Delivery
applications**



Features

Diagonal interlocked block and lug tread pattern

Wide tapered grooves

Unique lug pattern

Benefits

► Consistent traction

► Resistant to stone retention

► Efficient wet traction and self cleaning

SIZE RANGE

| TIRE SIZE | PR | LR | LOAD INDEX (single/ dual) | SR | APPROVED WHEEL | ALLOWED WHEEL | MAX LOAD SINGLE (LBS@ PSI) | MAX LOAD DUAL (LBS@ PSI) | SECTION WIDTH | SLR | OVERALL DIAMETER | TREAD DEPTH | RPM | WEIGHT |
|-------------|----|----|---------------------------------|----|-------------------|------------------|-------------------------------------|-----------------------------------|------------------|------|---------------------|------------------|-----|--------|
| | | | | | in | in | lbs | psi | in | in | in | 32 nd | | lbs |
| 225/70R19.5 | 12 | F | 125/123 | L | 6.75 | 6.00 | 3640@95 | 3415@95 | 8.9 | 14.9 | 31.9 | 19 | 650 | 75.0 |
| 225/70R19.5 | 14 | G | 128/126 | J | 6.75 | 6.00 | 3970@110 | 3750@110 | 8.9 | 14.9 | 31.9 | 19 | 650 | 75.0 |
| 245/70R19.5 | 16 | H | 136/134 | M | 7.50 | 6.75 | 4940@120 | 4675@120 | 9.6 | 15.4 | 33.0 | 19 | 629 | 78.4 |

PR Ply Rating **LR** Load Range **SR** Speed Rating **SLR** Static Loaded Radius



Mixed Service

M



Operation:

- Frequent use both on and off road
- Heavy loads
- Construction



GTO1



Designed for heavy front axles
this All Wheel position Radial
provides exceptional service in
On/Off Highway and Heavy Haul
applications



Features

Rib and lug pattern

Special cut and chip resistant
compound

Deep tread depth

Benefits

▶ Excellent traction and handling

▶ High resistance to cutting and
tearing

▶ Extended wear life

SIZE RANGE

| TIRE SIZE | PR | LR | LOAD INDEX (single/ dual) | SR | APPROVED WHEEL | ALLOWED WHEEL | MAX LOAD SINGLE (LBS@ PSI) | MAX LOAD DUAL (LBS@ PSI) | SECTION WIDTH | SLR | OVERALL DIAMETER | TREAD DEPTH | RPM | WEIGHT |
|-------------|----|----|------------------------------------|----|-------------------|----------------------------|-------------------------------------|-----------------------------------|------------------|------|---------------------|------------------|-----|--------|
| | | | | | in | in | lbs | psi | in | in | in | 32 nd | | lbs |
| 11R22.5 | 16 | H | 148/144 | M | 8.25 | 7.50 | 8810@123 | 8810@123 | 11 | 19.3 | 41.5 | 20 | 501 | 123.9 |
| 315/80R22.5 | 22 | M | 160/157 | J | 9.00 | 9.75 | 10,000@123 | 9,090@123 | 12.4 | 19.7 | 42.4 | 21 | 493 | 151.3 |
| 12.00R24 | 18 | J | 156/153 | K | 8.50 | 8.50V; 9.00V; 8.5V5° | 8810@123 | 8810@123 | 12 | 22.5 | 48.2 | 21 | 478 | 182.5 |
| 11R24.5 | 16 | H | 149/146 | M | 8.25 | 7.50 | 8810@123 | 8810@123 | 11 | 20.3 | 43.5 | 20 | 432 | 135.6 |

PR Ply Rating LR Load Range SR Speed Rating SLR Static Loaded Radius



GT876



Designed for heavy front axles this All Wheel position Wide Base Radial provides exceptional service in On/Off Highway and Heavy Haul applications



Features

- Aggressive tread pattern
- Special cut and chip compound
- Deep tread depth
- Wide footprint

Benefits

- ▶ Superior traction
- ▶ High resistance to cutting and tearing
- ▶ Extended tread life
- ▶ Maximum flotation

SIZE RANGE

| TIRE SIZE | PR | LR | LOAD INDEX (single/dual) | SR | APPROVED WHEEL | ALLOWED WHEEL | MAX LOAD SINGLE (LBS@ PSI) | MAX LOAD DUAL (LBS@ PSI) | SECTION WIDTH | SLR | OVERALL DIAMETER | TREAD DEPTH | RPM | WEIGHT |
|-------------|----|----|-----------------------------|-------|-------------------|------------------|-------------------------------------|-----------------------------------|------------------|------|---------------------|------------------|-----|--------|
| | | | | | in | in | lbs | psi | in | in | in | 32 nd | | |
| 385/65R22.5 | 18 | F | 158/-(160/) | L (K) | 11.75 | 12.25 | 9370@123 (9920@130) | - | 15.2 | 19.4 | 42.2 | 23 | 492 | 169.9 |
| 425/65R22.5 | 20 | G | 165/- | K | 12.25 | 11.75; 13.00 | 11400@120 | - | 16.7 | 20.5 | 44.3 | 24 | 469 | 205.6 |
| 445/65R22.5 | 20 | H | 169/- | K | 13.00 | 12.25; 14.00 | 12800@130 | - | 17.5 | 20.8 | 45.3 | 24 | 459 | 224.3 |

PR Ply Rating LR Load Range SR Speed Rating SLR Static Loaded Radius



GT978+



Perfectly suited for Regional and Mixed Service Steer, this All Wheel position Radial delivers exceptional mileage, performance and durability



Features

Five zigzag rib pattern

Special cut and chip compound

Shoulder reinforcement design

Benefits

▶ Excellent traction and stability

▶ High resistance to cutting and tearing

▶ Enhanced casing protection

SIZE RANGE

| TIRE SIZE | PR | LR | LOAD INDEX (s/d) | SS | APPROVED WHEEL | ALLOWED WHEEL | MAX LOAD | MAX PRESSURE | SECTION WIDTH | SLR | OVERALL DIAMETER | TREAD DEPTH | RPM | WEIGHT |
|-------------|----|----|------------------|------|----------------|---------------|----------|--------------|---------------|------|------------------|-------------|-----|--------|
| | | | | | in | in | lbs | psi | in | in | in | 32nd | | lbs |
| 385/65R22.5 | 18 | J | 158/-(160/) | L(K) | 11.75 | 12.25 | 9920@130 | - | 15.2 | 19.7 | 42.2 | 20 | 492 | 170.7 |

PR Ply Rating LR Load Range (s/d) Single/Dual SS Speed Symbol SLR Static Loaded Radius

PRODUCT RANGE



| DIMENSION | PR | LR | GSL213 FS | GT669+FS | GT979 |
|-------------|----|----|-----------|----------|----------|
| 215/75R17.5 | 16 | H | | | 135/133L |
| 255/70R22.5 | 16 | H | | | 140/137L |
| 11R22.5 | 14 | G | 144/142M | 144/142L | 144/142L |
| | 16 | H | | 148/145L | |
| 295/75R22.5 | 14 | G | 144/141M | 144/141L | 144/141L |
| 11R24.5 | 14 | G | 146/143M | 149/146L | 146/143L |
| | 16 | H | | 149/146L | |
| 285/75R24.5 | 14 | G | 144/141M | 144/141L | 144/141L |



| DIMENSION | PR | LR | GT01 | GT876 | GT978 |
|-------------|----|----|----------|--------|--------|
| 11R22.5 | 16 | H | 148/144M | | |
| 315/80R22.5 | 20 | L | 156/153J | | |
| 385/65R22.5 | 18 | J | | 158/-L | 158/-L |
| 425/65R22.5 | 20 | L | | 165/-K | |
| 445/65R22.5 | 20 | L | | 169/-K | |
| 11R24.5 | 16 | H | 149/146M | | |
| 12.00R24 | 18 | J | 156/153K | | |



| DIMENSION | PR | LR | GT279 | GT879 | GT668 | GT688 | GT678 |
|-------------|----|----|----------|----------|----------|----------|----------|
| 215/75R17.5 | 16 | H | | 135/133J | | | |
| 235/75R17.5 | 14 | G | | 132/130M | | | |
| | 16 | H | | 143/141J | | | |
| 225/70R19.5 | 12 | F | | | | | 125/123L |
| | 14 | G | 136/134M | | | | 128/126J |
| 245/70R19.5 | 16 | H | 136/134M | | | | 136/134M |
| 265/70R19.5 | 16 | H | | 140/138M | | | |
| 10R22.5 | 14 | G | 141/139M | | | 141/139M | |
| 255/70R22.5 | 16 | H | 140/137M | | | | |
| 11R22.5 | 14 | G | 144/142M | 144/142M | 144/142L | 144/142M | |
| | 16 | H | 148/144M | 148/144M | 148/145L | 148/144M | |
| 295/75R22.5 | 14 | G | 144/141M | 144/141M | 144/141L | 144/141L | |
| 12R22.5 | 16 | H | | 152/148M | | | |
| 315/80R22.5 | 18 | J | | 154/151M | | | |
| 385/65R22.5 | 18 | J | | | | | |
| 11R24.5 | 14 | G | 146/143M | 146/143M | 146/143L | 146/143M | |
| | 16 | H | 149/146M | 149/146M | 149/146L | 149/146M | |
| 285/75R24.5 | 14 | G | 144/141M | 144/141M | 144/141L | 144/141M | |

Inflation Recommendations

SAFETY

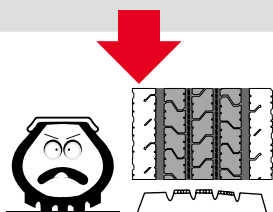
Important instructions for safe inflation



Tire pressure directly influences tire life and safety

Over-inflation reduces:

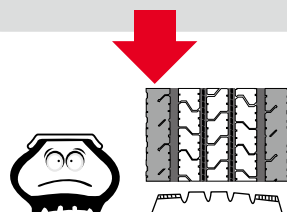
- Comfort
- Traction
- Braking Efficiency
- Tread life span, particularly on drive axle Tires.
- Safety



Over-inflation

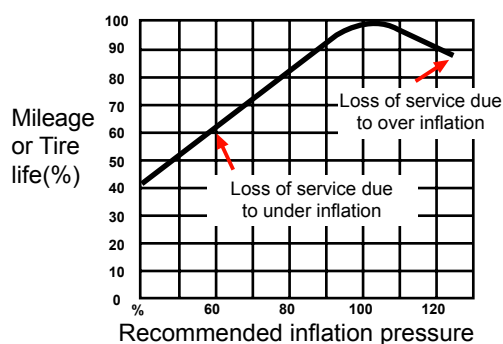
Under-inflation leads to:

- Reduced vehicle handling and safety
- A reduction in casing retreadability
- An increase in rolling resistance and fuel consumption
- Heat build-up



Under-inflation

Effect of inflation pressure on tire life



ADVICE BEFORE INFLATION

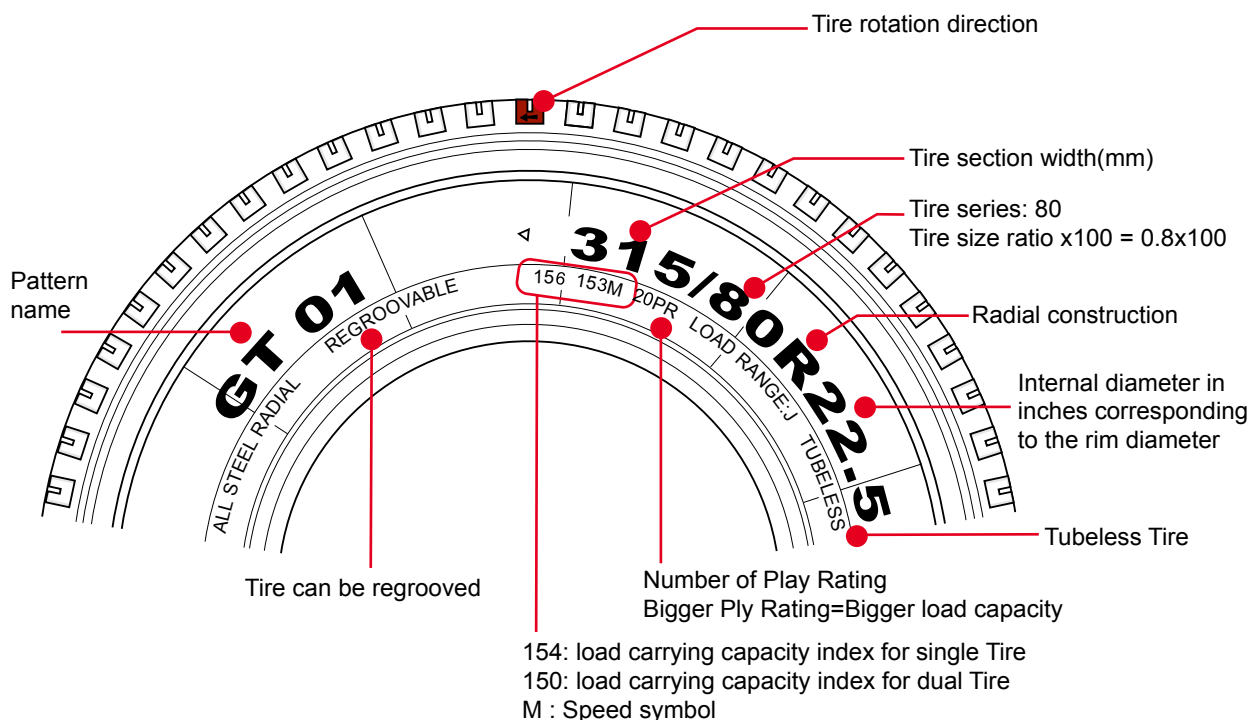
- 1 Weigh your vehicle and its load, axle by axle, to determine tire pressure.
- 2 Measure the pressure when cold (when the vehicle has been stationary for several hours): pressures must be checked at regular intervals and during each service.
- 3 Important safety instruction: pressure increases when the vehicle is in motion. Never reduce the pressure of a hot tire.
- 4 Pressure gauges: must be accurate, handled with care and calibrated regularly



Caution:

Driving with insufficient pressure can damage your tires. Severely underinflated tires must be inspected by an expert.

Designations, Load and Speed Index



Refer to the Speed Symbols and Load capitalize Index tables below



Before fitting, it is essential to check the different markings to ensure that the tires meet the maximum load and speed requirements.

Speed Symbols

| SS | MPH |
|----|-----|
| B | 31 |
| C | 37 |
| D | 40 |
| E | 43 |
| F | 50 |
| G | 56 |
| J | 62 |
| K | 68 |
| L | 75 |
| M | 81 |
| N | 87 |
| P | 93 |
| Q | 199 |
| R | 106 |

Load capitalize Index

| LI | LBS | LI | LBS | LI | LBS |
|-----|-------|-----|-------|-----|--------|
| 115 | 2,680 | 136 | 4,940 | 157 | 9,090 |
| 116 | 2,755 | 137 | 5,070 | 158 | 9,370 |
| 117 | 2,835 | 138 | 5,205 | 159 | 9,650 |
| 118 | 2,910 | 139 | 5,355 | 160 | 9,920 |
| 119 | 3,000 | 140 | 5,510 | 161 | 10,200 |
| 120 | 3,085 | 141 | 5,675 | 162 | 10,500 |
| 121 | 3,195 | 142 | 5,840 | 163 | 10,700 |
| 122 | 3,305 | 143 | 6,005 | 164 | 11,000 |
| 123 | 3,415 | 144 | 6,175 | 165 | 11,400 |
| 124 | 3,525 | 145 | 9,395 | 166 | 11,700 |
| 125 | 3,640 | 146 | 6,610 | 167 | 12,000 |
| 126 | 3,750 | 147 | 6,780 | 168 | 12,300 |
| 127 | 3,860 | 148 | 6,940 | 169 | 12,800 |
| 128 | 3,970 | 149 | 7,160 | 170 | 13,200 |
| 129 | 4,080 | 150 | 7,390 | 171 | 13,600 |
| 130 | 4,190 | 151 | 7,160 | 172 | 13,900 |
| 131 | 4,300 | 152 | 7,390 | 173 | 14,300 |
| 132 | 4,410 | 153 | 8,050 | 174 | 14,800 |
| 133 | 4,540 | 154 | 8,270 | 175 | 15,200 |
| 134 | 4,675 | 155 | 8,540 | 176 | 15,700 |
| 135 | 4,805 | 156 | 8,820 | 177 | 16,100 |

Load and Inflation Table

| Pattern | Tire Size Designation | PR | Use | Tire Load Limits at Various | | | | | |
|--|-----------------------|----|--------|-----------------------------|------|------|------|------|------|
| | | | | psi | 70 | 75 | 80 | 85 | 90 |
| GT879 GT979 | 215/75R17.5 | 16 | DUAL | kg | | | 1450 | 1520 | 1590 |
| | | | | lbs | | | 3196 | 3350 | 3504 |
| | | | SINGLE | kg | | | 1570 | 1640 | 1710 |
| | | | | lbs | | | 3460 | 3615 | 3769 |
| GT879 | 235/75R17.5 | 14 | DUAL | kg | 1370 | 1420 | 1490 | 1560 | 1630 |
| | | | | lbs | 3019 | 3130 | 3284 | 3438 | 3593 |
| | | | SINGLE | kg | 1470 | 1520 | 1590 | 1660 | 1730 |
| | | | | lbs | 3240 | 3350 | 3504 | 3659 | 3813 |
| GT879 | 235/75R17.5 | 16 | DUAL | kg | | | 1965 | 2035 | 2105 |
| | | | | lbs | | | 4331 | 4485 | 4639 |
| | | | SINGLE | kg | | | 2115 | 2185 | 2255 |
| | | | | lbs | | | 4661 | 4816 | 4970 |
| GT678 | 225/75R19.5 | 12 | DUAL | kg | 1020 | 1070 | 1140 | 1210 | 1280 |
| | | | | lbs | 2248 | 2358 | 2513 | 2667 | 2821 |
| | | | SINGLE | kg | 1120 | 1170 | 1240 | 1310 | 1380 |
| | | | | lbs | 2468 | 2579 | 2733 | 2887 | 3042 |
| GT279 GT678 | 225/75R19.5 | 14 | DUAL | kg | 1170 | 1220 | 1290 | 1360 | 1430 |
| | | | | lbs | 2579 | 2689 | 2843 | 2997 | 3152 |
| | | | SINGLE | kg | 1270 | 1320 | 1390 | 1460 | 1530 |
| | | | | lbs | 2799 | 2909 | 3064 | 3218 | 3372 |
| GT279 GT678 | 245/70R19.5 | 16 | DUAL | kg | | | 1580 | 1650 | 1720 |
| | | | | lbs | | | 3482 | 3637 | 3791 |
| | | | SINGLE | kg | | | 1700 | 1770 | 1840 |
| | | | | lbs | | | 3747 | 3901 | 4055 |
| GT879 | 265/70R19.5 | 16 | DUAL | kg | | 1820 | 1890 | 1960 | 2030 |
| | | | | lbs | | 4011 | 4166 | 4320 | 4474 |
| | | | SINGLE | kg | | 1960 | 2030 | 2100 | 2170 |
| | | | | lbs | | 4320 | 4474 | 4628 | 4783 |
| GT979 GT279 | 255/70R22.5 | 16 | DUAL | kg | | | 1760 | 1830 | 1900 |
| | | | | lbs | | | 3879 | 4033 | 4188 |
| | | | SINGLE | kg | | | 1960 | 2030 | 2100 |
| | | | | lbs | | | 4320 | 4474 | 4628 |
| GT279 GT688 | 10R22.5 | 14 | DUAL | kg | | | 1960 | 2030 | 2100 |
| | | | | lbs | | | 4320 | 4474 | 4628 |
| | | | SINGLE | kg | | | 2105 | 2175 | 2245 |
| | | | | lbs | | | 4639 | 4794 | 4948 |
| GSL213 GT279 GT668 GT669+ GT688 GT879 GT979 | 11R22.5 | 14 | DUAL | kg | 2190 | 2240 | 2310 | 2380 | 2450 |
| | | | | lbs | 4827 | 4937 | 5091 | 5246 | 5400 |
| | | | SINGLE | kg | 2340 | 2390 | 2460 | 2530 | 2600 |
| | | | | lbs | 5157 | 5268 | 5422 | 5576 | 5730 |
| GT668 GT669+ GT279 GT879 | 11R22.5 | 16 | DUAL | kg | | | 2360 | 2430 | 2500 |
| | | | | lbs | | | 5201 | 5356 | 5510 |
| | | | SINGLE | kg | | | 2610 | 2680 | 2750 |
| | | | | lbs | | | 5752 | 5907 | 6061 |
| GT01 GT688 | 11R22.5 | 16 | DUAL | kg | | | 2260 | 2330 | 2400 |
| | | | | lbs | | | 4981 | 5135 | 5290 |
| | | | SINGLE | kg | | | 2610 | 2680 | 2750 |
| | | | | lbs | | | 5752 | 5907 | 6061 |

RADIAL PLY TIRES FOR TRUCKS, BUSES AND TRAILERS USED IN NORMAL HIGHWAY SERVICE.
TIRES MOUNTED ON 15° DROP CENTER RIMS

| Cold Inflation Pressures (Pressure Listed is the Minimum for the Load) | | | | | | | | | |
|--|------|------|------------------------|------------------------|------------------------|------------------------|------------------------|------------------------|-----|
| | 95 | 100 | 105 | 110 | 115 | 120 | 123 | 125 | 130 |
| | 1650 | 1720 | 1790 | 1860 | 1910 | 1990 | | 2060(H) ¹³³ | |
| | 3637 | 3791 | 3945 | 4099 | 4210 | 4386 | | 4540(H) | |
| | 1770 | 1840 | 1910 | 1980 | 2040 | 2110 | | 2180(H) ¹³⁵ | |
| | 3901 | 4055 | 4210 | 4364 | 4496 | 4650 | | 4796(H) | |
| | 1690 | 1760 | 1830 | 1900(G) ¹³⁰ | | | | | |
| | 3725 | 3879 | 4033 | 4180(G) | | | | | |
| | 1790 | 1860 | 1930 | 2000(G) ¹³² | | | | | |
| | 3945 | 4099 | 4254 | 4400(G) | | | | | |
| | 2165 | 2235 | 2305 | 2375 | 2435 | 2505 | | 2575(H) ¹⁴¹ | |
| | 4772 | 4926 | 5080 | 5235 | 5367 | 5521 | | 5675(H) | |
| | 2315 | 2385 | 2455 | 2525 | 2585 | 2655 | | 2725(H) ¹⁴³ | |
| | 5102 | 5257 | 5411 | 5565 | 5697 | 5852 | | 6005(H) | |
| | 1340 | 1410 | 1480 | 1550(F) ¹²³ | | | | | |
| | 2953 | 3108 | 3262 | 3415(F) | | | | | |
| | 1440 | 1510 | 1580 | 1650(F) ¹²⁵ | | | | | |
| | 3174 | 3328 | 3482 | 3640(F) | | | | | |
| | 1490 | 1560 | 1630 | 1700(G) ¹²⁶ | | | | | |
| | 3284 | 3438 | 3593 | 3750(G) | | | | | |
| | 1590 | 1660 | 1730 | 1800(G) ¹²⁸ | | | | | |
| | 3504 | 3659 | 3813 | 3970(G) | | | | | |
| | 1780 | 1850 | 1920 | 1990 | 2050 | 2120(H) ¹³⁴ | | | |
| | 3923 | 4077 | 4232 | 4386 | 4518 | 4675(H) | | | |
| | 1900 | 1970 | 2040 | 2110 | 2170 | 2240(H) ¹³⁶ | | | |
| | 4188 | 4342 | 4496 | 4650 | 4783 | 4940(H) | | | |
| | 2090 | 2160 | 2230 | 2300 | 2360(H) ¹³⁸ | | | | |
| | 4606 | 4761 | 4915 | 5069 | 5205(H) | | | | |
| | 2230 | 2300 | 2370 | 2440 | 2500(H) ¹⁴⁰ | | | | |
| | 4915 | 5069 | 5223 | 5378 | 5510(H) | | | | |
| | 1960 | 2030 | 2100 | 2170 | 2230 | 2300(H) ¹³⁷ | | | |
| | 4320 | 4474 | 4628 | 4783 | 4915 | 5070(H) | | | |
| | 2160 | 2230 | 2300 | 2370 | 2430 | 2500(H) ¹⁴⁰ | 4250(J) ¹⁵⁸ | | |
| | 4761 | 4915 | 5069 | 5223 | 5356 | 5510(H) | 9370(J) | | |
| | 2160 | 2230 | 2300 | 2370 | 2430(G) ¹³⁹ | | | | |
| | 4761 | 4915 | 5069 | 5223 | 5355(G) | | | | |
| | 2305 | 2375 | 2445 | 2515 | 2575(G) ¹⁴¹ | | | | |
| | 5080 | 5235 | 5389 | 5543 | 5675(G) | | | | |
| | 2510 | 2580 | 2650(G) ¹⁴² | | | | | | |
| | 5532 | 5686 | 5840(G) | | | | | | |
| | 2660 | 2730 | 2800(G) ¹⁴⁴ | | | | 5670 | | |
| | 5863 | 6017 | 6175(G) | | | | 12497 | | |
| | 2560 | 2630 | 2700 | 2770 | 2830 | 2900(H) ¹⁴⁵ | | | |
| | 5642 | 5797 | 5951 | 6105 | 6237 | 6395(H) | | | |
| | 2810 | 2880 | 2950 | 3020 | 3080 | 3150(H) ¹⁴⁸ | | | |
| | 6193 | 6348 | 6502 | 6656 | 6788 | 6940(H) | | | |
| | 2460 | 2530 | 2600 | 2670 | 2730 | 2800(H) ¹⁴⁴ | | | |
| | 5422 | 5576 | 5730 | 5885 | 6017 | 6175(H) | | | |
| | 2810 | 2880 | 2950 | 3020 | 3080 | 3150(H) ¹⁴⁸ | | | |
| | 6193 | 6348 | 6502 | 6656 | 6788 | 6940(H) | | | |

Load and Inflation Table

| Pattern | Tire Size Designation | PR | Use | Tire Load Limits at Various | | | | | |
|--|-----------------------|----|--------|-----------------------------|------|------|------|------|------|
| | | | | psi | 70 | 75 | 80 | 85 | 90 |
| GSL213 GT279 GT668 GT669+ GT688 GT879 GT979 | 295/75R22.5 | 14 | DUAL | kg | 1860 | 1950 | 2060 | 2130 | 2220 |
| | | | | lbs | 4099 | 4298 | 4540 | 4695 | 4893 |
| | | | SINGLE | kg | 2040 | 2140 | 2240 | 2340 | 2440 |
| | | | | lbs | 4496 | 4717 | 4937 | 5157 | 5378 |
| GT879 | 12R22.5 | 16 | DUAL | kg | | | | | 2680 |
| | | | | lbs | | | | | 5907 |
| | | | SINGLE | kg | | | | | 3080 |
| | | | | lbs | | | | | 6788 |
| GT01 | 315/80R22.5 | 20 | DUAL | kg | | | 2575 | 2650 | 2750 |
| | | | | lbs | | | 5675 | 5841 | 6061 |
| | | | SINGLE | kg | | | 2800 | 2910 | 3030 |
| | | | | lbs | | | 6171 | 6414 | 6678 |
| GT01 | 315/80R22.5 | 22 | DUAL | kg | | | 2575 | 2650 | 2750 |
| | | | | lbs | | | 5675 | 5841 | 6061 |
| | | | SINGLE | kg | | | 2800 | 2910 | 3030 |
| | | | | lbs | | | 6171 | 6414 | 6678 |
| GT879 | 315/80R22.5 | 18 | DUAL | kg | | | 2575 | 2650 | 2750 |
| | | | | lbs | | | 5675 | 5841 | 6061 |
| | | | SINGLE | kg | | | 2800 | 2910 | 3030 |
| | | | | lbs | | | 6171 | 6414 | 6678 |
| GSL213 GT279 GT668 GT669+ GT688 GT879 GT979 | 11R24.5 | 14 | DUAL | kg | 2265 | 2315 | 2385 | 2455 | 2525 |
| | | | | lbs | 4992 | 5102 | 5257 | 5411 | 5565 |
| | | | SINGLE | kg | 2540 | 2590 | 2660 | 2730 | 2800 |
| | | | | lbs | 5598 | 5708 | 5863 | 6017 | 6171 |
| GT279 GT01 GT668 GT669+ GT688 GT879 | 11R24.5 | 16 | DUAL | kg | | | 2460 | 2530 | 2600 |
| | | | | lbs | | | 5422 | 5576 | 5730 |
| | | | SINGLE | kg | | | 2710 | 2780 | 2850 |
| | | | | lbs | | | 5973 | 6127 | 6281 |
| GSL213 GT279 GT668 GT669+ GT688 GT879 GT979 | 285/75R24.5 | 14 | DUAL | kg | 1870 | 1970 | 2060 | 2150 | 2240 |
| | | | | lbs | 4121 | 4342 | 4540 | 4739 | 4937 |
| | | | SINGLE | kg | 2060 | 2160 | 2240 | 2360 | 2460 |
| | | | | lbs | 4540 | 4761 | 4937 | 5201 | 5422 |
| GT978 GT876 | 385/65R22.5 | 18 | DUAL | kg | | | | | |
| | | | | lbs | | | | | |
| | | | SINGLE | kg | 2880 | 3060 | 3150 | 3350 | 3470 |
| | | | | lbs | 6348 | 6744 | 6943 | 7383 | 7648 |
| GT876 | 425/65R22.5 | 20 | DUAL | kg | | | | | |
| | | | | lbs | | | | | |
| | | | SINGLE | kg | 3430 | 3640 | 3750 | 3980 | 4130 |
| | | | | lbs | 7560 | 8023 | 8265 | 8772 | 9103 |
| GT876 | 445/65R22.5 | 20 | DUAL | kg | | | | | |
| | | | | lbs | | | | | |
| | | | SINGLE | kg | 3270 | 3950 | 4125 | 4320 | 4470 |
| | | | | lbs | 7207 | 8706 | 9092 | 9521 | 9852 |
| GT01 | 12.00R24 | 18 | DUAL | kg | | | | 3240 | 3310 |
| | | | | lbs | | | | 7141 | 7295 |
| | | | SINGLE | kg | | | | 3600 | 3670 |
| | | | | lbs | | | | 7934 | 8089 |

Cold Inflation Pressures (Pressure Listed is the Minimum for the Load)

| | 95 | 100 | 105 | 110 | 115 | 120 | 123 | 125 | 130 |
|--|-----------|------------|-------------------------------|-------------------------------|-------------------------------|-------------------------------|-------------------------------|------------|-------------------------------|
| | 2300 | 2390 | 2470 | 2575(G) ¹⁴¹ | | | | | |
| | 5069 | 5268 | 5444 | 5675(G) | | | | | |
| | 2500 | 2620 | 2710 | 2800(G) ¹⁴⁴ | | | | | |
| | 5510 | 5774 | 5973 | 6175(G) | | | | | |
| | 2740 | 2810 | 2880 | 2950 | 3010 | 3080 | 3150(H) ¹⁴⁸ | | |
| | 6039 | 6193 | 6348 | 6502 | 6634 | 6788 | 6940(H) | | |
| | 3140 | 3210 | 3280 | 3350 | 3410 | 3480 | 3550(H) ¹⁵² | | |
| | 6921 | 7075 | 7229 | 7383 | 7516 | 7670 | 7830(H) | | |
| | 2900 | 2970 | 3070 | 3150 | 3270 | 3450 | 3650(L) ¹⁵³ | | |
| | 6392 | 6546 | 6766 | 6943 | 7207 | 7604 | 8045(L) | | |
| | 3150 | 3260 | 3370 | 3450 | 3590 | 3750 | 4000(L) ¹⁵⁶ | | |
| | 6943 | 7185 | 7427 | 7604 | 7912 | 8265 | 8810(L) | | |
| | 2900 | 2970 | 3070 | 3150 | 3270 | 3450(J) ¹⁵¹ | | 3795 | 4125(L) ¹⁵⁷ |
| | 6392 | 6546 | 6766 | 6943 | 7207 | 7610(J) | | 8350 | 9090(L) |
| | 3150 | 3260 | 3370 | 3450 | 3590 | 3750(J) ¹⁵⁴ | | 4150 | 4355(L) |
| | 6943 | 7185 | 7427 | 7604 | 7912 | 8270(J) | | 9135 | 10000(L) |
| | 2900 | 2970 | 3070 | 3150 | 3270 | 3450(J) ¹⁵¹ | | | |
| | 6392 | 6546 | 6766 | 6943 | 7207 | 7610(J) | | | |
| | 3150 | 3260 | 3370 | 3450 | 3590 | 3750(J) ¹⁵⁴ | | | |
| | 6943 | 7185 | 7427 | 7604 | 7912 | 8270(J) | | | |
| | 2585 | 2655 | 2725(G) ¹⁴³ | | | | | | |
| | 5697 | 5852 | 6005(G) | | | | | | |
| | 2860 | 2930 | 3000(G) ¹⁴⁶ | | | | | | |
| | 6303 | 6458 | 6610(G) | | | | | | |
| | 2660 | 2730 | 2800 | 2870 | 2930 | 3000(H) ¹⁴⁶ | | | |
| | 5863 | 6017 | 6171 | 6325 | 6458 | 6610(H) | | | |
| | 2910 | 2980 | 3050 | 3120 | 3180 | 3250(H) ¹⁴⁹ | | | |
| | 6414 | 6568 | 6722 | 6876 | 7009 | 7160(H) | | | |
| | 2360 | 2410 | 2490 | 2575(G) ¹⁴¹ | | | | | |
| | 5201 | 5312 | 5488 | 5675(G) | | | | | |
| | 2575 | 2650 | 2740 | 2800(G) ¹⁴⁴ | | | | | |
| | 5675 | 5841 | 6039 | 6175(G) | | | | | |
| | | | | | | | | | |
| | | | | | | | | | |
| | 3650 | 3740 | 3850 | 4000 | 4100 | 4180 | 4250(J) ¹⁵⁸ | | |
| | 8045 | 8243 | 8485 | 8816 | 9036 | 9213 | 9370(J) | | |
| | | | | | | | | | |
| | | | | | | | | | |
| | 4250 | 4440 | 4580 | 4750 | 4880 | 5150(L) ¹⁶⁵ | | | |
| | 9367 | 9786 | 10094 | 10469 | 10756 | 11400(L) | | | |
| | | | | | | | | | |
| | | | | | | | | | |
| | 4625 | 4820 | 4960 | 5150 | 5290 | 5600 | 5670 | 5740 | 5800(L) ¹⁶⁹ |
| | 10194 | 10623 | 10932 | 11351 | 11659 | 12342 | 12497 | 12651 | 12800(L) |
| | 3370 | 3440 | 3510 | 3580 | 3650(J) ¹⁵³ | | | | |
| | 7427 | 7582 | 7736 | 7890 | 8040(J) | | | | |
| | 3730 | 3800 | 3870 | 3940 | 4000(J) ¹⁵⁶ | | | | |
| | 8221 | 8375 | 8529 | | 8810(J) | | | | |

Limited Warranty

Limited Warranty Policy and Procedures
Commercial Tires (TBR)
North America – 2012
(Effective: March 15, 2012)

1.1. Eligibility

This Limited Warranty Policy and Procedures applies to any new tire manufactured by GITI Tire (GT Radial brand) that bears the corresponding D.O.T. serial number.

The eligible tire must be operated under normal service and used on the same vehicle on which they were originally installed according to the vehicle manufacturer's recommendations.

1.2. What is covered by the warranty and for how long?

Upon examination by GITI Tire, any eligible Commercial (TBR) tire that becomes unusable for any reason that is within the manufacturer's control (see exclusions in section 1.3 "What it is Not Covered"), within 72 months from the date of tire manufacture and before wearing down to 2/32 inch (1.6 mm) of the remaining original tread depth, will be replaced with an equivalent new GITI Tire product on the basis set forth in this Limited Warranty.

GITI Tire products adjusted under this Limited Warranty due to a substantiated condition related to materials and/or workmanship up to the first 2/32" of the original tread depth, will be replaced free of charge (Federal Excise Tax included). The cost of mounting and balancing and other service charges, disposal fees, or applicable taxes are payable by the customer.

GITI Tire products adjusted under this Limited Warranty due to a substantiated condition related to materials and/or workmanship that are worn beyond the first 2/32" of the original usable tread will be replaced with an equivalent new GITI Tire product on a pro rata basis. The cost of mounting, balancing, full Federal Excise Tax, and other service charges, disposal fees, or applicable taxes are payable by the customer.

1.3. What is not covered?

This limited warranty does not apply to tires which become unserviceable due to:

- Road hazard injury (e.g., a cut, snag, bruise, impact damage or puncture);
- Improper use or operation, including: improper inflation pressure, overloading, curbing, use of improper rim or wheel, improper mounting or demounting, tire/wheel spinning, misuse, misapplication, negligence, tire alteration or use in competition or racing;
- Improper maintenance of tire, wheel or vehicle components: misalignment, imbalance, worn components, or other vehicle conditions, characteristics or defects;
- Highway tires that are operated on in off highway applications;
- Tires subjected to severe under-inflation or run-flat conditions;
- Tires deemed unretreadable due to excessive tread wear or improper buffing;
- Improperly retreaded tire including inadequate inspection, preparation, material, equipment, repair, etc.;
- Improper repaired tire;
- Improper regrooving
- Uneven or rapid wear which is caused by mechanical irregularity in the vehicle such as wheel misalignment, (measured tread difference of 2/32" or more across the tread on the same tire);
- Accident, fire, chemical corrosion, tire alteration or vandalism;
- Flat spotting caused by improper storage or brake lock;
- Contamination or degradation by petroleum products or other chemicals, solid or gaseous materials other than air, nitrogen or carbon dioxide (for example, water based sealers or balancing substances);
- Ozone or weather checking for initial 48 months after manufacturing date;
- Tires branded "Blemished" or "BLEM" are not adjustable for appearance conditions;
- With the serial number buffed or cut;
- Purchased or used outside the United States or Canada;
- With less than 2/32nds of an inch remaining tread in any groove;
- With a ride complaint that occurs after the first 2/32nds of tread wear;
- Damaged through use of any tube or flap

1.4. Owner's Obligation

To make an eligible claim under this Limited Warranty Policy and Procedures, the owner must present a claim with the tire to an Authorized Dealer of products made by GITI Tire. Owner must present an original tire sales invoice indicating the date of purchase. Owner will be required to sign the GITI Tire Warranty Claim Application Form or dealer replacement sales receipt.

Owner is responsible for paying all applicable taxes set forth under this Limited Warranty Policy and Procedures. Owner is also responsible for paying local tire-disposal fees and any parts or service regardless of mileage or months of service. This includes payment for tire rotation, alignment, towing, road service, valve stems and tire repairs. Owner is responsible for maintaining proper tire air pressure and for proper maintenance of the tire.

2. TIRE REGISTRATION

The registration of GITI Tire brand tires is an important safety precaution required by law. Registration will allow GITI Tire to notify the owner in the unlikely event of a product return program. GITI Tire authorized dealers will provide a tire registration card in order to record the D.O.T. tire identification number, along with the dealer's name and address. Owner is required to fill in his or her name and address and mail to the address printed on the card or make the tire registration on-line (www.gititireusa.com/tire-registration).

3. ADJUSTMENT PROCEDURES

3.1. General Guidelines

- 3.1.1. Customers must use the Claim Application Form provided by GITI Tire for adjustments to be considered for credit. The Claim Application form must be filled in completely.
- 3.1.2. Adjustment credits will be based on GITI Tire current selling prices to Distributor, at the time of the claim.
- 3.1.3. Customer must send the completed Warranty Claim form with attached DOT Serial Number cut-outs and clear pictures showing the claimed condition to:

**GITI Tire (USA), Ltd.
Technical Service Department
10404 Sixth Street
Rancho Cucamonga, CA 91730
Phone: 1-909-980-0968 / Fax: 909-476-4028
e-mail: techservice@us.giti.com**

Limited Warranty

Limited Warranty Policy and Procedures
Commercial Tires (TBR)
North America – 2012
(Effective: March 15, 2012)

- 3.1.4. Upon receipt of any adjustment claims, GITI Tire at its discretion, may elect to do the following:
- a. Ask the tires to be shipped to one of our adjustment locations at our expense for inspection. Shipping instructions will be provided if this option is used.
 - b. Send a Service Engineer from our company for a direct inspection of the tires at your location. In that case, the Service Engineer will determine if the tire is adjustable or not; if so, he will make the adjustment at your location, will cut out the DOT serial number and will destroy the tire. After such visit, you will still complete and forward the Warranty Claim forms with all requested information and the DOT serial cut-outs attached.
 - c. If our service engineer is unable to visit your location, the claim will be processed from the paperwork received.
 - d. If the tire was found adjustable you will be notified, will receive the credit and afterwards you must destroy the tire.
 - e. If the tire is found not adjustable you will receive a letter with an explanation. At your request, non-adjustable tires may be returned at your expense within 30 days of notification. GITI Tire will not be responsible for tires left at our location after 30 days of such notification.
 - f. Do not dispose of the tires until you have received your credit.
 - g. **IMPORTANT:** Any form that is illegible, incomplete, with no clear picture of the alleged defect, without complete DOT cut-out might be returned to you for completion and will delay the payment process. Photocopies will not be acceptable.

DISCLAIMER: No other warranties are expressed or implied. Without limiting the generality of the foregoing, GITI Tire (USA), Ltd. hereby expressly disclaims warranties of title, merchantability, fitness for a particular purpose and non-infringement. GITI Tire (USA), Ltd. or the manufacturer is not responsible for loss of time, inconvenience, loss of use of a vehicle or any other consequential damages or expenses. Some states do not allow these exclusions or limitations of incidental or consequential damages; therefore, the above limitations or exclusions may not apply to you.

Limited Casing Warranty 2012

(Effective Date: 03-15-2012)

- 1- The casings of GT Radial truck tires are warranted when the tire becomes unserviceable due to factors within manufacturer's control.
- 2- The following casing allowance will be applied to GT Radial truck tires in normal over the road service and produced after March 1, 2006.

| SIZE | 1st RETREAD | 2nd RETREAD |
|---|-------------|-------------|
| 215/75R 17.5, 235/75R17.5 | \$30.00 | \$20.00 |
| 225/70R19.5 | \$30.00 | \$20.00 |
| 245/70 R 19.5, 265/70 R 19.5 | \$30.00 | \$20.00 |
| 10 R 22.5 | \$50.00 | \$30.00 |
| 255/70 R 22.5 | \$65.00 | \$50.00 |
| 315/80R22.5 | \$80.00 | \$70.00 |
| 385/65R22.5, 425/65R22.5, 445/64 R 22.5 | \$80.00 | \$70.00 |
| 295/75R22.5, 11 R 22.5 | \$80.00 | \$70.00 |
| 285/75R 25.5, 11 R 24.5 | \$80.00 | \$70.00 |

- 3- The above Casing Warranty will be valid through the second (2nd) retread for 72 months from the date of manufacture, whichever comes first.
- 4- Tires used in mining and logging service are not covered under this warranty.
- 5- The Limited Casing Warranty is subject to the terms and conditions as set forth by GITI TIRE (USA), Ltd.

Exclusions For Casing Warranty:

- a. Casings which can not be retreaded due to excessive tread wear.
- b. Casings that have already been retreaded more than twice
- c. Casing presented for warranty adjustment more than 6 years after the manufacturing date, based on tire DOT serial number.
- d. Failures resulting from faulty or incorrect retread processing or materials.
- e. Tires which have the original DOT or retreader's DOT numbers removed or are rendered illegible.
- f. Costs of retreading services or materials are specifically excluded.

Disclaimer

Any implied warranties, including warranties of merchantability and fitness for a particular use, shall be limited in duration to the above period. To the extent permitted by law GITI shall not be responsible incidental or consequential damages, such as loss of use of the tire or of the vehicle on which it is used, inconvenience or commercial loss.

This is the only expressed warranty applicable to GT Radial brand tires and supersedes the terms of any previous warranty. GITI neither assumes nor authorizes anyone to assume for it any warranty.



VALUE FOR THE FLEET

